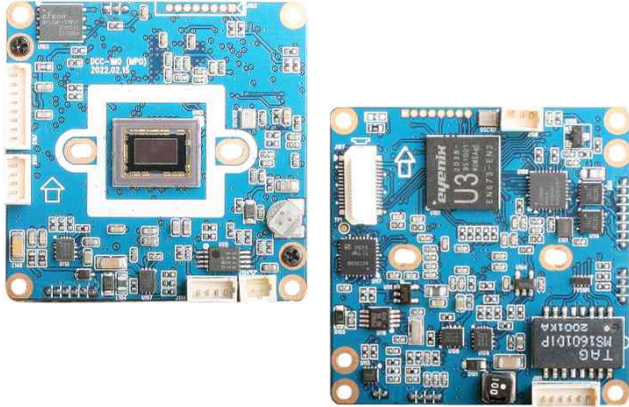


DCC-1M0

CMOS IP VIDEO MODULE



Main Features

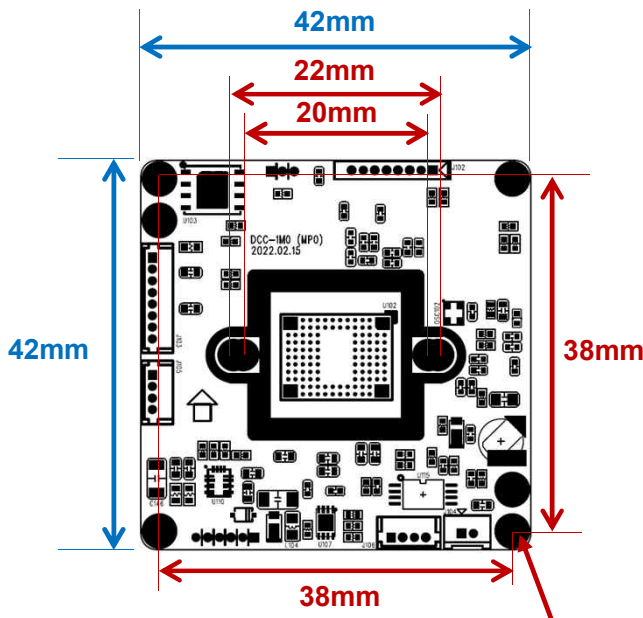
- 1/2.8" 2.9µm Pixel Progressive Sony Starvis CMOS Sensor
- 2 Mega Pixels – Maximum 1080p (1920x1080)
- Mountable Lens: Fixed & DC IRIS & AF Motorized Lens
- TDN ICR Mechanism Available
- WDR, DSS, 3D-NR Supported conditionally
- Onvif Ver. 17.06 Compatible
- Supported Video Codec: H.264, MJPEG
- CMOS IP Video Module (42x42mm 1-board)



Specification

Model	DCC-1M0
Signal System	IP (Network)
Pickup Device	1/2.8"(D-6.46mm) 2.12M Sony CMOS Sensor
Scanning System	Progressive Scan (16:9)
Sync. System	Internal
Total Pixels	2.16MP [1,945(H)x1,109(V)]
Active Pixels	2.12MP [1,937(H)x1,097(V)]
Min. Illumination	0.1Lux, 0.05(ICR on), 0.003Lux (DSS on)
Mechanical ICR	Available (Option)
Video Out 1 (RJ45)	Up to 30fps @ 1920x1080p (1920x1080, 1280x720, 800x600, 704x480, 704x400, 640x480, 640x360, 320x240)
Video Out 2	N/A
Lens	Option
Lens (Mount)	Fixed & DC Auto IRIS & AF Stepping Motor Lens M12(S-Mount), Ø14 & C/CS Lens Holders
OSD	Via Webpage Viewer
Camera Title	Off, On(Max. 8 Characters)
Language	English
White Balance	AUTO, AUTOext, Preset, Manual
BLC	Off, BLC, HLC, WDR(Low, Middle, High) WDR can't work together with 3D-NR or DSS
Day & Night Mode	Auto, Color, B&W, Ext.
Electronic Shutter	1/25(30)~1/30,000sec
Noise Reduction	Off, On(Low, Middle, High) DNR can't work together with WDR or DSS
DSS(Sens-up)	X32 DSS can't work together with 3D-NR or WDR
Mirror	Off, On(Mirror, Flip)
Other Features	Motion Detection(4 Zones), Privacy Mask(8 Zones), Defog, Gamma Etc.
Network Protocol	TCP/IP, UDP/IP, RTP, RTSP, RTCP, NTP, HTTP DHCP, FTP, SMTP, DNS, DDNS Onvif 17.06 Compatible
At-a-time Access	Maximum 3 users
Video Codec	H.264, MJPEG (Duplex Streaming)
Sensor In/Alarm Out	2/1 (Option: IP Sub Board)
Audio Line In/Out	1/1 (Option: IP Sub Board)
Power Source	DC12V / POE
Power Consumption	Less than 3.2 Watts (260mA)
Operating Temp.	-10℃ ~ 55℃ (Humidity :0%RH ~ 90%RH)
Size (mm)	42(W) x 42(D) – 1 Board
Weight	8.5 g (Without OLPF)

Dimension



PCB T = 1.2mm

Ø3.8(2.1mm hole x 4)
PCB Coordinate
(-19, 19) (19, -19)
(19, 19) (-19, -19)

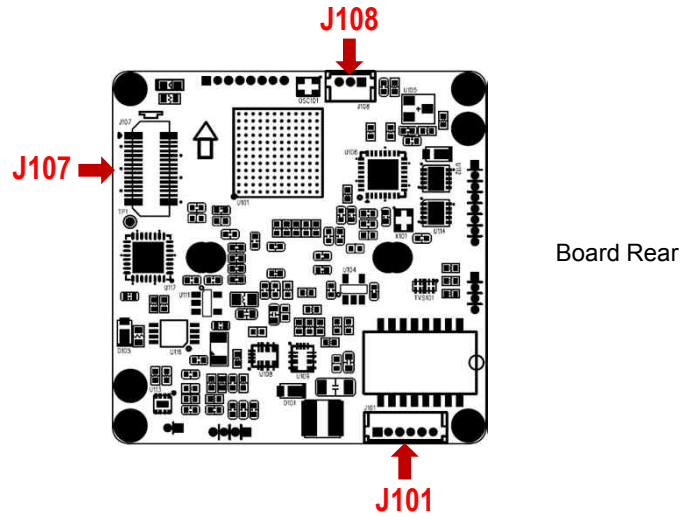
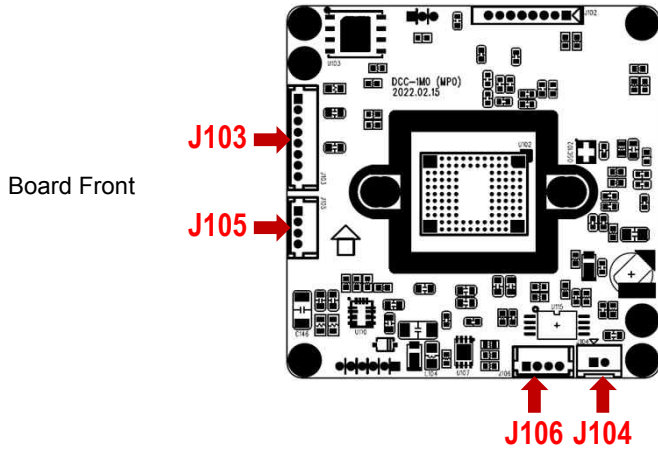
Option

- OLPF
- Lens
 - Board Type (f=1.1(fish-eye), 1.7, 2.1, 2.5, 2.8, 3.6, 4, 6, 8, 12, 16, 25mm)
 - 2-Motor Type: 3~12mm, 5~50mm
- IP Sub Board (Sensor In/Out, Audio Line In/Out, RS485 Out, SD Memory Card)

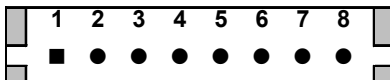
DCC-1M0

CMOS IP VIDEO MODULE

Pin Connections



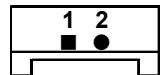
J103 – Motor Control



No.	Pin Item	No.	Pin Item
1	FOCUS A-	5	ZOOM B+
2	FOCUS A+	6	ZOOM B-
3	ZOOM A-	7	FOCUS B-
4	ZOOM A+	8	FOCUS B+

Wafer DIP type: 1.25mm pitch – 8 pin
 Manufacturer: **Molex**
 MFG Part Number: **53047-0810**

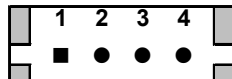
J104 – TDN ICR



No.	Pin Item	No.	Pin Item
1	ICR (+)	2	ICR (-)

Wafer DIP type: 1.25mm pitch – 2 pin
 Manufacturer: **Yeonho**
 MFG Part Number: **12512WS-02B**

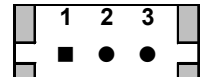
J106 – DC IRIS



No.	Pin Item	No.	Pin Item
1	DAMP +	3	DRV +
2	DAMP -	4	DRV -

Wafer DIP type: 1.25mm pitch – 4 pin
 Manufacturer: **Molex**
 MFG Part Number: **53047-0410**

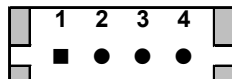
J108 – Reset



No.	Pin Item	No.	Pin Item
1	Factory Reset Switch	3	GND
2	System Reset Switch		

Wafer DIP type: 1.25mm pitch – 3 pin
 Manufacturer: **Molex**
 MFG Part Number: **53047-0310**

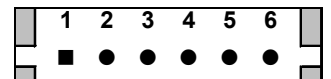
J105 – LED



No.	Pin Item	No.	Pin Item
1	LED VCC (DC12V Out)	3	EXT_DN (DC3.3V In)
2	GND	4	LED_CTL (DC3.3V OUT)

Wafer DIP type: 1.25mm pitch – 4 pin
 Manufacturer: **Molex**
 MFG Part Number: **53047-0410**

J101 – Ethernet



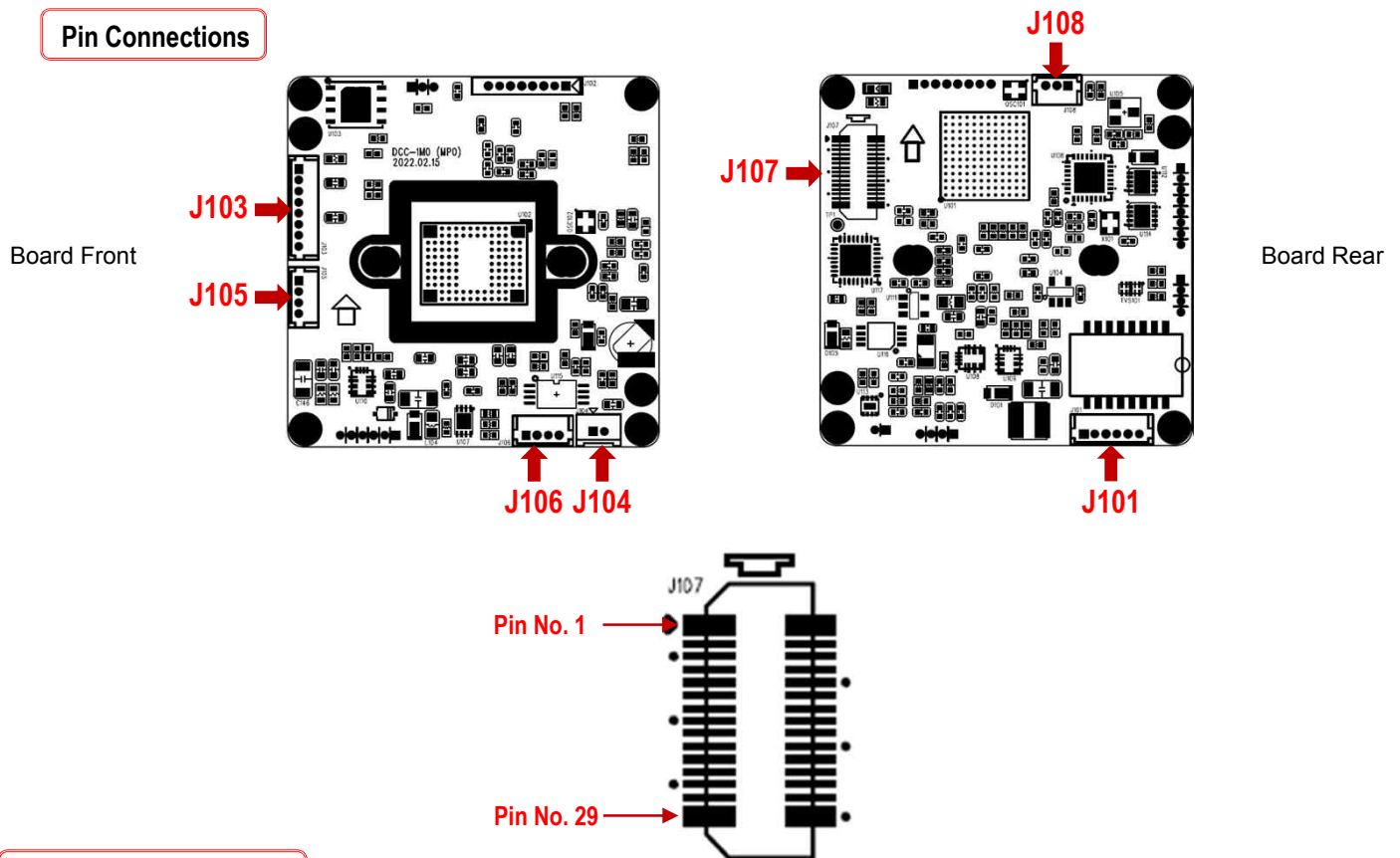
No.	Pin Item	No.	Pin Item
1	DC 12V	4	RXD + (Ethernet)
2	GND	5	TXD - (Ethernet)
3	RXD - (Ethernet)	6	TXD + (Ethernet)

Wafer DIP type: 1.25mm pitch – 6 pin
 Manufacturer: **Molex**
 MFG Part Number: **53047-0610**

DCC-1M0

CMOS IP VIDEO MODULE

Pin Connections



J107 – to IP Sub Board

Wafer SMD type: **0.5mm pitch – 30 pin**

Manufacturer: **Panasonic**

MFG Part Number: **AXK6S30547YG (Socket)**

Connector on DCC-1M0 to IP Sub board.

- Matching Part Number: **AXK5S30047YG (Header)**

Connector on IP-Sub board to DCC-1M0.

PCB XY Coordinates: **(-16.7, 10)**

Features: **Line Audio In/Out, RS232C In/Out, Alarm In(2ea)/Out(1ea), Micro SD Memory, Factory Reset**

No.	Pin Item	No.	Pin Item
1	RESET (In)	16	DC 5V (Out)
2	DC 3.3V (Out)	17	GND
3	FACTORY DEFAULT (In)	18	TXRX LED (Out)
4	DC 3.3V (Out)	19	GND
5	TXD – UART 3.3V (Out)	20	GND
6	GND	21	ALARM2 IN (In)
7	RXD – UART 3.3V (In)	22	GND
8	LINE(AUDIO) IN (In)	23	SD Card SDIO0 D0 (In/Out)
9	ALARAM1 IN (In)	24	GND
10	LINE(AUDIO) OUT (Out)	25	SD Card SDIO0 D1 (In/Out)
11	ALARM OUT (Out)	26	SD Card SDIO0 CMD (Out)
12	GND	27	SD Card SDIO0 D2 (In/Out)
13	CVBS (Out) : Not In Use for DCC-1M0	28	SD Card SDIO0 CLK (Out)
14	DC 5V (Out)	29	SD Card SDIO0 D3 (In/Out)
15	GND	30	SD Card SDIO0 nCD (In)

DCC-1M0

CMOS IP VIDEO MODULE

- **IP camera connection**

Connect LAN cable to RJ45 jack of camera

Connect the other end LAN cable to RJ45 jack of router or hub

If you are not using POE switcher to provide the power to the IP camera, connect regulated a DC12V power adaptor to the IP camera.

Wait for about 30 seconds until the camera initialization is completed

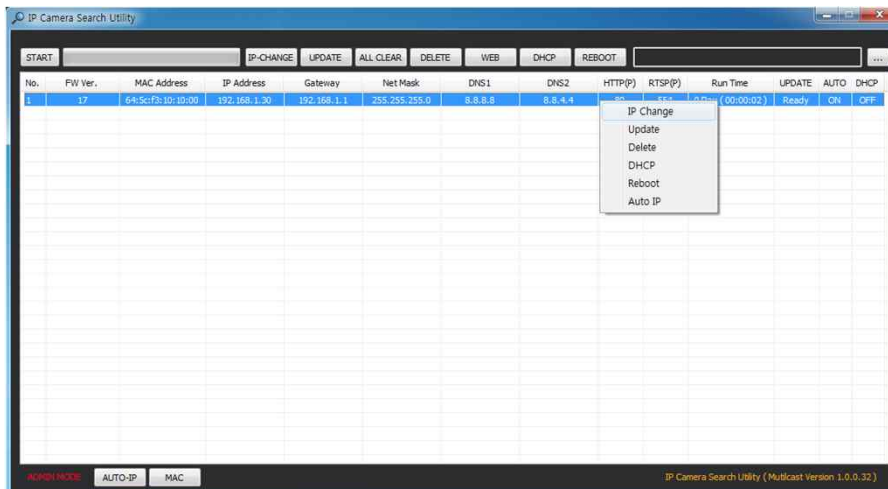
Factory Default IP address is **192.168.1.30**

Factory Default ID & Password are **admin / admin.**

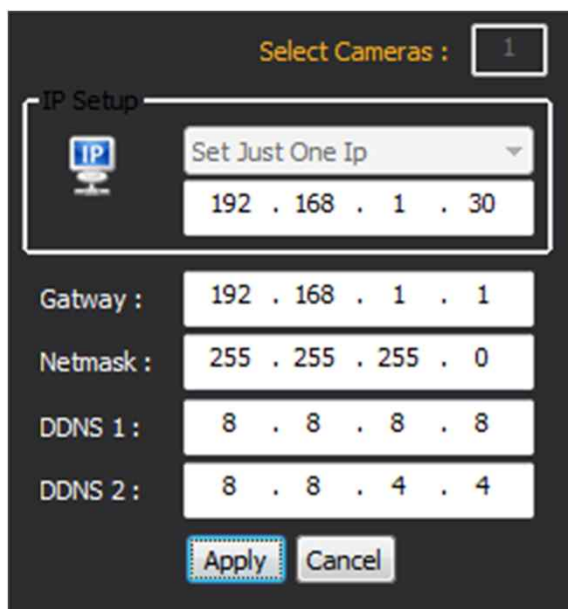
- **Using IP Cam Search**

You can simply change the IP address by using ‘IP Cam Search’ provided.

Run IP Cam Search as administrator. Click “START” button when the IP camera is connected to your PC or network, all IP address will appear. This program can be downloaded from the SUPPORT section of our web site at www.parantek.com.



Choose & change the IP address of camera you want to change and click “IP change”



After click the “IP Change” button left window will be appeared. Once you click “Apply” button, the camera will reboot for 10second.

After reboot the camera, the changed IP address will be applied and appeared.

- **Checking Video by Web Viewer**

Run web browser and Input the IP address which taken from IP Search.

- **Supported O/S & Web Browser**

- O/S : Windows7, 8, 10, MAC

- Browser : Internet Explorer 11 or higher, Chrome , Firefox, Safari, Opera